

A New Development Concept

West Tavaputs Plateau – Uinta Basin, Utah

Cottonwood Gulch Project Area - Piceance Basin, Colorado



BBC West Tavaputs Plateau Development Concept

- **Wildlife mitigation pre-planning with UT Division of Wildlife Resources and BLM**
 - **Wildlife Mitigation Plan elements:**
 1. **Complete a water-shed specific review of ecological conditions and limitations in project area**
 2. **Get involvement from appropriate wildlife/conservation groups**
 3. **Use best available, applicable, scientific information**
 4. **Avoidance combined with minimization of impacts, then mitigation for any remaining impacts**
 5. **Assess ecological needs and land uses to determine appropriate mitigation ideas-hopefully on a large scale**
 6. **Monitor performance toward clear objectives**
 - **West Tavaputs Plateau Mitigation Oversight Committee (WTPMOC) to ensure proper mitigation plan implementation as well as appropriate annual adaptive changes to the plan**

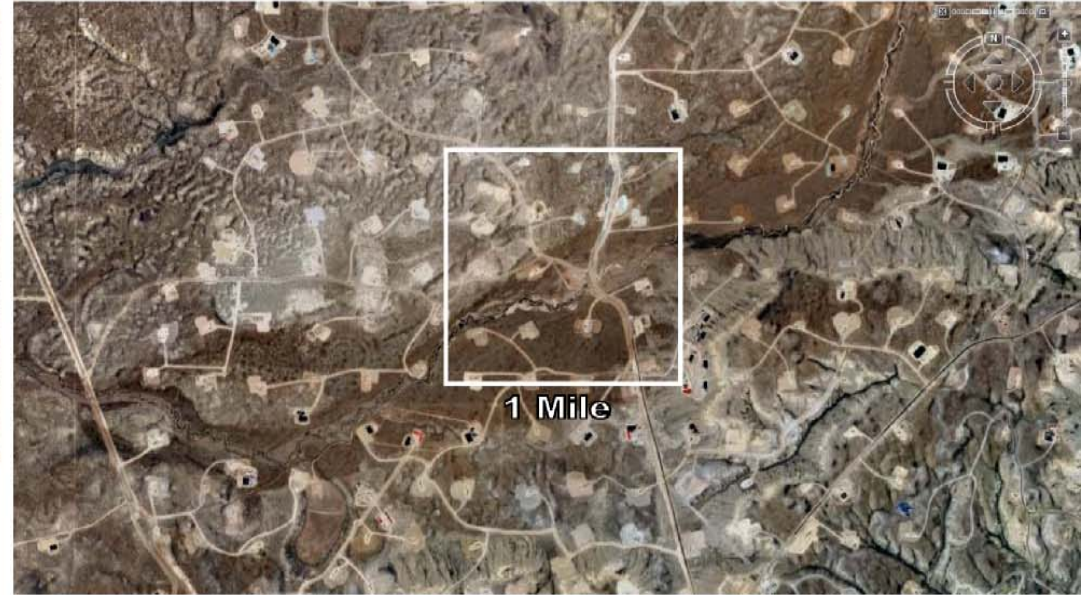
BBC Cottonwood Gulch Project Development Concept

- **Extensive pre-planning discussions with BLM/CDOW and appropriate sportsmen/conservation groups**
- **Avoidance and minimization of impacts through:**
 - **Significant expansion of protected areas**
 - **Unprecedented use of multiple well directional drilling technology-to minimize surface footprint (1.2 pads per sq. mile)**
 - **Substantial infrastructure investments to minimize traffic and emissions impacts**
- **Offset any remaining impacts with habitat/environmental enhancements in project area to realize net ecological benefits (ie. make the habitat better)**
- **Third-party monitoring to ensure compliance for potential impact assessment, reclamation, and habitat enhancements.**

Cottonwood Gulch Surface Disturbance Comparison



Piceance Valley



Jonah Field



Proposed Cottonwood Gulch



1 Mile (All Images)

All fields shown are developed on 10-acre or less down-hole well density